

LabField

065760 Mini Vortex Mixer

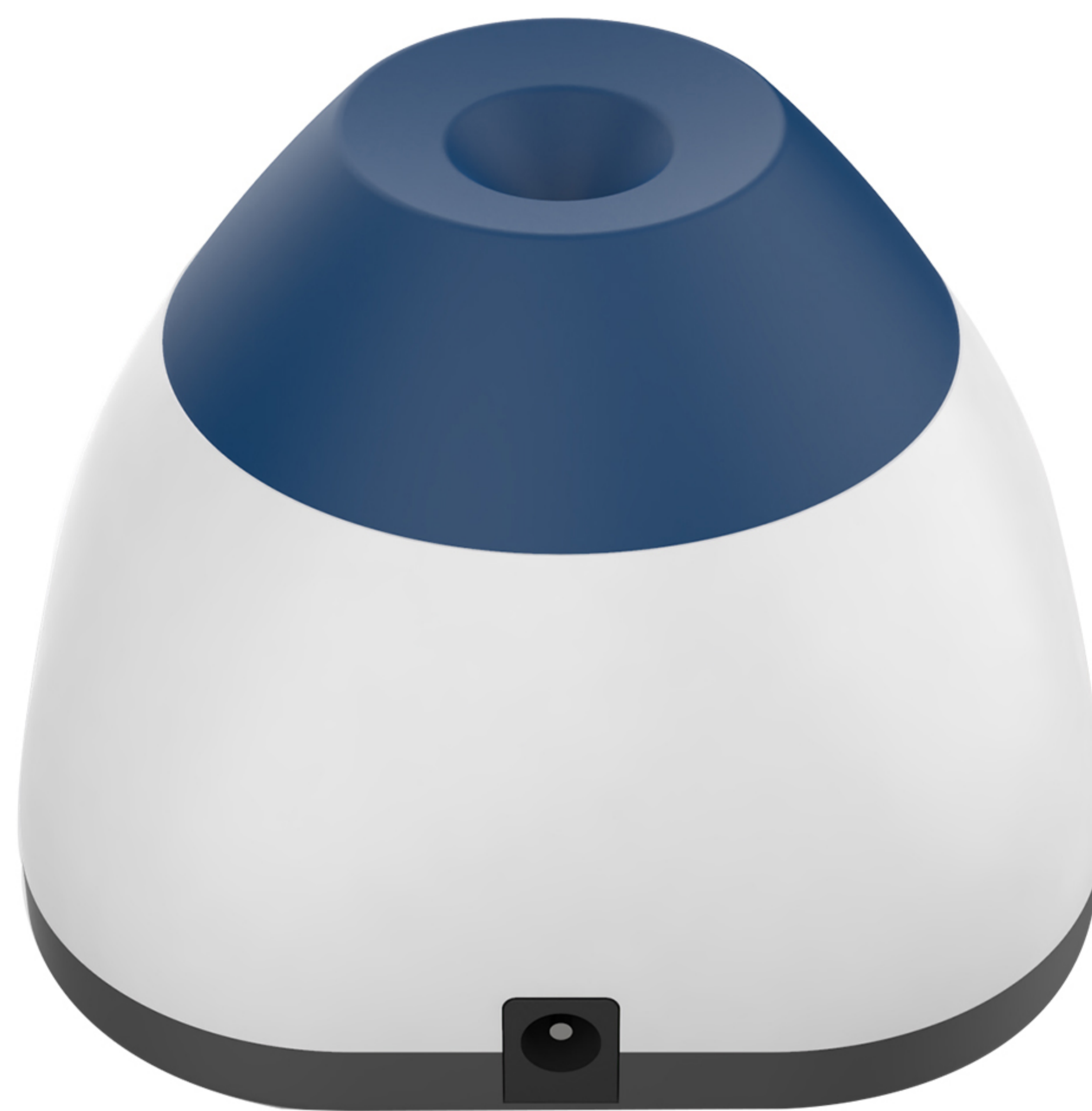


User manual

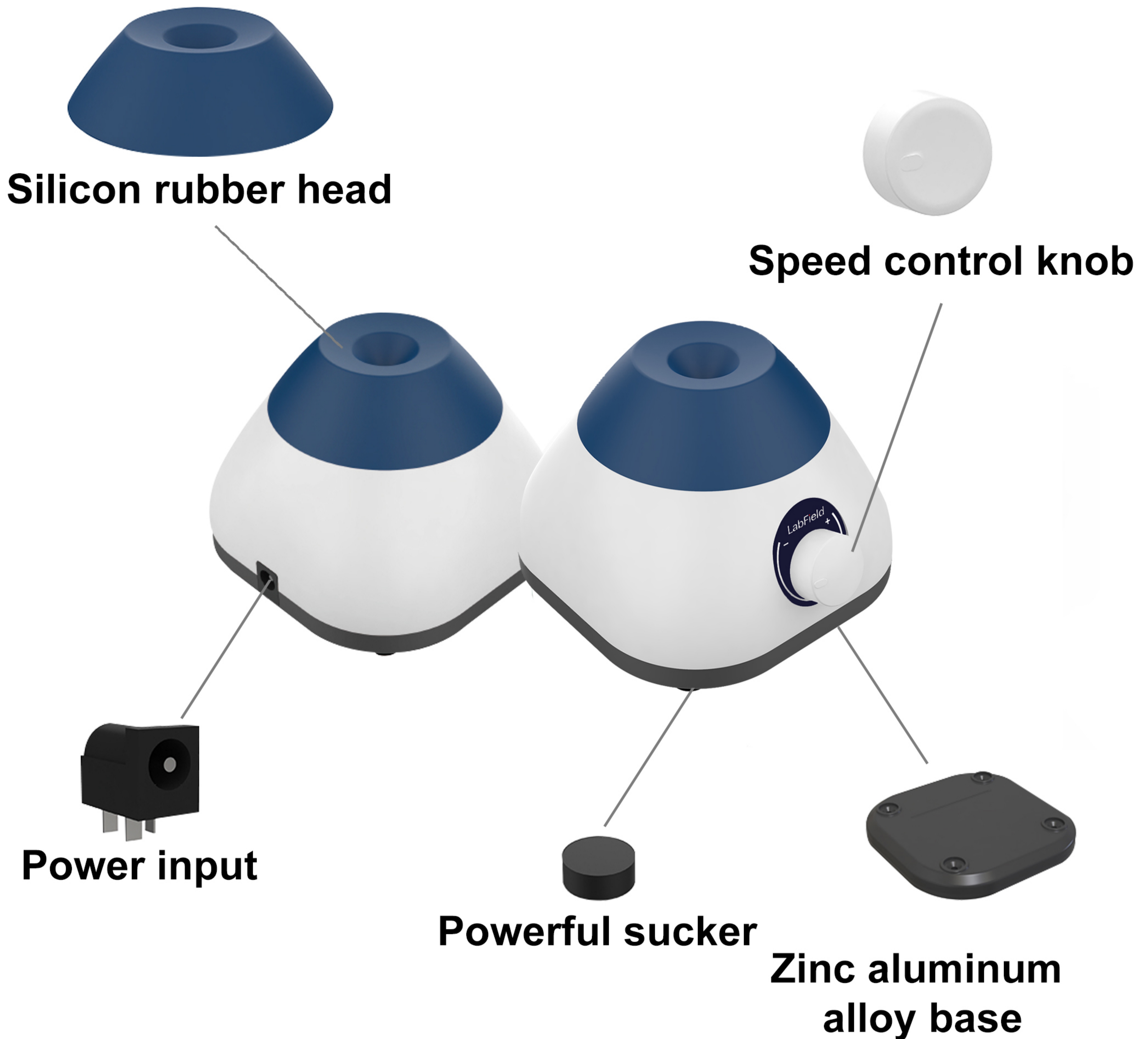
I: Product brief

Labfield Vortex mixer adopts international advanced design concept and manufacturing technologies, and has the advantages of smooth and beautiful appearance, compact and firm structure, high versatility, and simple operation. It is a rare instrument for scientific research. This vortex mixer is mainly used to prevent blood coagulation, immunoprecipitation and other similar laboratory purposes. It is mainly used for molecular hybrid blood and other samples that need to be mixed.

II: Product overview



III: Product introduction



IV: Product data

Control mode	Speed adjustment
Motor type	Brushless motor
Orbital diameter (MM)	4.5(circular oscillation)
Max handling volume (ML)	50
Speed range (RPM)	0-3000
Output power (W)	12
Volatge	AC100-240V
Power adapter	DC12V 1A
Permissible relative humidity	5~40°C , 80%RH
Product dimension (MM)	100*93*72
Package dimension (MM)	190*126*113
Product weight (KG)	0.56/0.37

V: Correct usage

Application

- It is mainly used for molecular hybrid blood and other samples that need to be mixed.

Usage

- It is widely used as an experimental tool in institutions of higher learning, environmental protection, sanitation, epidemic prevention, chemical industry, tap water and medical treatment.

Steps for usage

Speed adjustment

- Plug in the plug and turn on the power
- Place the centrifuge tube or test tube in the center of the silicone cap, rotate the knob, and press lightly to run.

Instrument using environment

- Indoor use
- Altitude: $\leq 2000\text{m}$
- The working temperature range of the instrument is $+5^{\circ}\text{C} \sim +40^{\circ}\text{C}$
- The applicable temperature range of the instrument is $\leq 80\%$
- There is no vibration and airflow that affect performance around

Safety Precautions

- Do not plug or unplug the power connector and toggle the power button when the hands are stained with liquid.
- Do not plug or unplug the power plug when the instrument is powered.
- It is strictly forbidden to maintain and scrub the instrument under power-on state.
- It is strictly forbidden to install the instrument on a work surface that is uneven and shakes and shakes.

Delivery list

- Mini Vortex Mixer
- Power Cord
- User Manual



+



+

