



connected with a mains cord to an electrical plug. The air flow is then regulated on the stepless rotary knob.

Optimal airflow is achieved when the cart just stay free of the rail. Too little airflow can cause friction between slider and rail, and too strong airflow can cause turbulence around the cart.

## Description

This adjustable fan is specially designed for use with Frederiksen air cushion rail, 195000.

The fan is delivered complete with mains cable and hose for connection to air cushion rail.

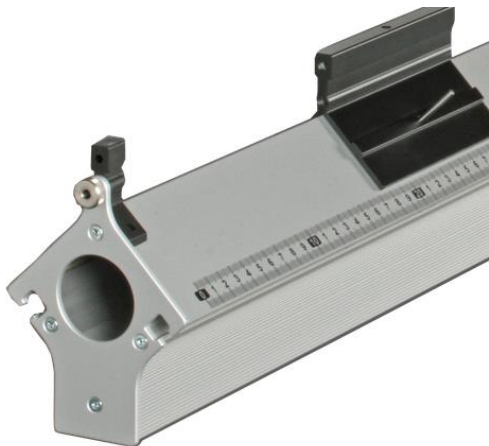
## Technical data

-Voltage: 115 VAC, 60 Hz.

-Power: Max 350 W.

-Fuse: 8 AF.

## Demostration use



The hose is connected to the supply hole on the air cushion rail, after which the fan is